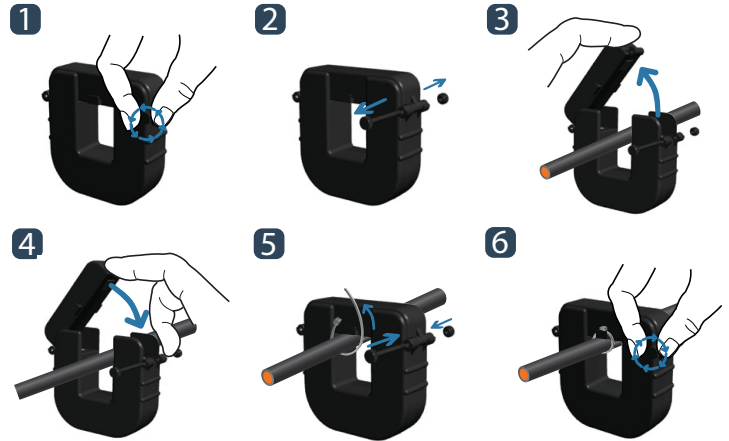


## Split-core Current Transformer $\epsilon$



### JSC-XX-XXXX-5A Series

How to use >>>>



JSC series of split-core current transformer offers 5A at secondary from sensed primary current for metering application. It can be used for power meter, distribution system, control panels, switchgear and other equipment. It is designed to install to live power line without disconnection as split-core compact type. Also, over-voltage protection circuit is included to offer safe, fast and cost effective installation.

#### Applications

- Power meter
- Switchgear
- Distributed measurement systems
- General Sets
- Control panels

#### Features

- High quality comprehensive measurement
- Available in a wide range of transformer ratings
- Accuracy up to Class 0.5

#### Benefits

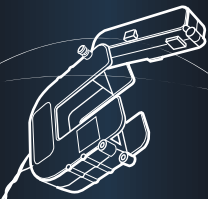
- Faster installation
- Cost effective
- Long product life

#### Notice

- Core contact surface is waterproofed, however if it gets rusty, you could reuse after removing rusts with spraying WD-40 or CRC5-56 on the rusted side
- Customizing output lead wire

#### Specification

Accuracy	Class 0.5 / 1.0 / 3.0
Leads	18AWG,600VAC
System Voltage	720V(0.72kV)
Overload withstand	1.2 times rated current continuously
Compliant with	IEC/EN60044-1 & IEC61010-1
Operating Temperature Range	-20°C to 70°C
Relative Humidity	0-90% non-condensing
Test Voltage	3kV for 1 minute
Frequency Range	50/60Hz
Protection Level	Bipolar 6.5Vp
Installation Category	CAT II or CAT III 600VAC



## How to Order / Model Reference

eg **J S C - 0 1 - 0 0 0 0 / 5 A**

Model **J S C - 0 1**

Primary Current

Select code from ratio table above

Secondary Current

5A **5 A**

## Current Transformer Ratios

Primary Current A	Burden			Code
	cl. 0.5 VA	cl. 1 VA	cl. 3 VA	
100			0.5	0100
150			1.5	0150
200		0.5		0200
250		0.5		0250
300		0.5		0300
400		0.5		0400

5A Secondary

Accuracy conforms to IEC 60044-1, meets the measuring range from 5 to 120 % of In

## How to Order / Model Reference

eg **J S C - 0 2 - 0 0 0 0 / 5 A**

Model **J S C - 0 2**

Primary Current

Select code from ratio table above

Secondary Current

5A **5 A**

## Current Transformer Ratios

Primary Current A	Burden			Code
	cl. 0.5 VA	cl. 1 VA	cl. 3 VA	
400		1.0		0400
500		2.5		0500
600	1.0	5.0		0600
750	1.0	5.0		0750
800	1.0	5.0		0800
1000	2.5	10.0		1000

5A Secondary

Accuracy conforms to IEC 60044-1, meets the measuring range from 5 to 120 % of In

## How to Order / Model Reference

eg **J S C - 0 3 - 0 0 0 0 / 5 A**

Model **J S C - 0 3**

Primary Current

Select code from ratio table above

Secondary Current

5A **5 A**

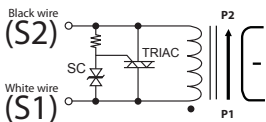
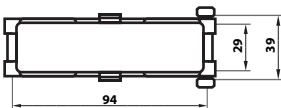
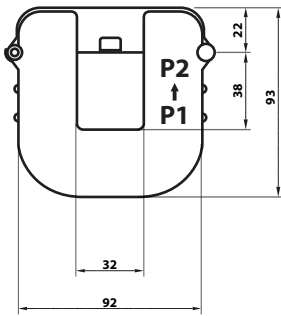
## Current Transformer Ratios

Primary Current A	Burden			Code
	cl. 0.5 VA	cl. 1 VA	cl. 3 VA	
800	1.0	5.0		0800
1000	1.0	5.0		1000
1200	5.0	10.0		1200
1250	5.0	10.0		1250
1500	10.0	20.0		1500
1600	10.0	20.0		1600
2000	10.0	20.0		2000
2400	10.0	20.0		2400

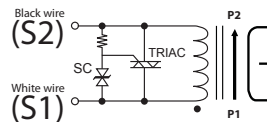
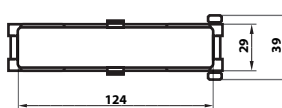
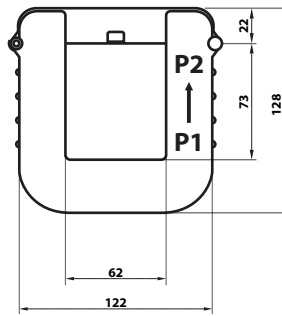
5A Secondary

Accuracy conforms to IEC 60044-1, meets the measuring range from 5 to 120 % of In

## Dimensions



## Dimensions



## Dimensions

