

PROMET



Digital integrated protection, metering & Monitoring equipment

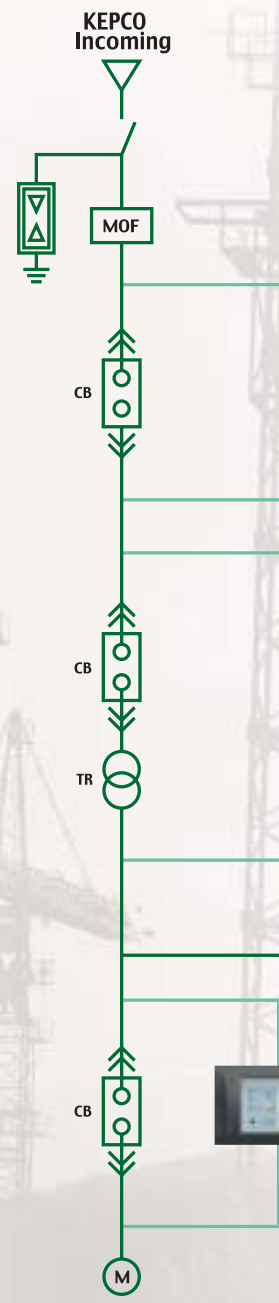


PROMET Series is an integrated digital power protection and monitoring equipment where the functions of measuring instruments and protection relays used in power distribution panels are integrated into a single unit.

PROMET Series makes remote monitoring and controls circuit breakers, which is made possible through an exclusive high-speed communication network.

It also protects the system safely from various faults.

FUNCTION	Accuracy									
		F	T	M	U-I	U-V	U-P	U-VI	U-D	U-M
PROTECTION										
OCR(50/51)	-	●	●	●	●			●	●	●
DOCR(67P)	-	●								
OCGR(50N/51N)	-	●	●	●	●					●
DGR(67N)	-	●		●					●	
SGR(67G)	-	●		●					●	
OVR(59)	-	●				●	●	●		
OVGR(64G)	-	●		●		●	●		●	
UVR(27)	-	●		●		●	●	●		
POR(47P)	-	●		●			●			●
NSOVR(47N)	-	●		●						
RDR(87T)	-		●							
THR(49)	-			●						●
NSOCR(46)	-			●						●
UCR	-			●						
48ST/51LR	-			●						
MEASURE										
Va, Vb, Vc, Vo	0.5%	●		●		●	●	●	●	
Vab, Vbc, Vca	0.5%	●		●		●	●	●		
Ia, Ib, Ic, In/Io	0.5%	●	●	●	●			●	●	●
Secondary Ir, Is, It, In	0.5%		●							
3W, 3Var, 3VA	0.5%	●		●						
Import WH, VarH	0.5%	●		●						
Export WH, VarH	0.5%	●		●						
Power Factor	0.1%	●		●						
Frequency	0.1%	●		●						
Symmetrical V, I	0.5%	●		●						
Thermal Θ	1.0%			●						

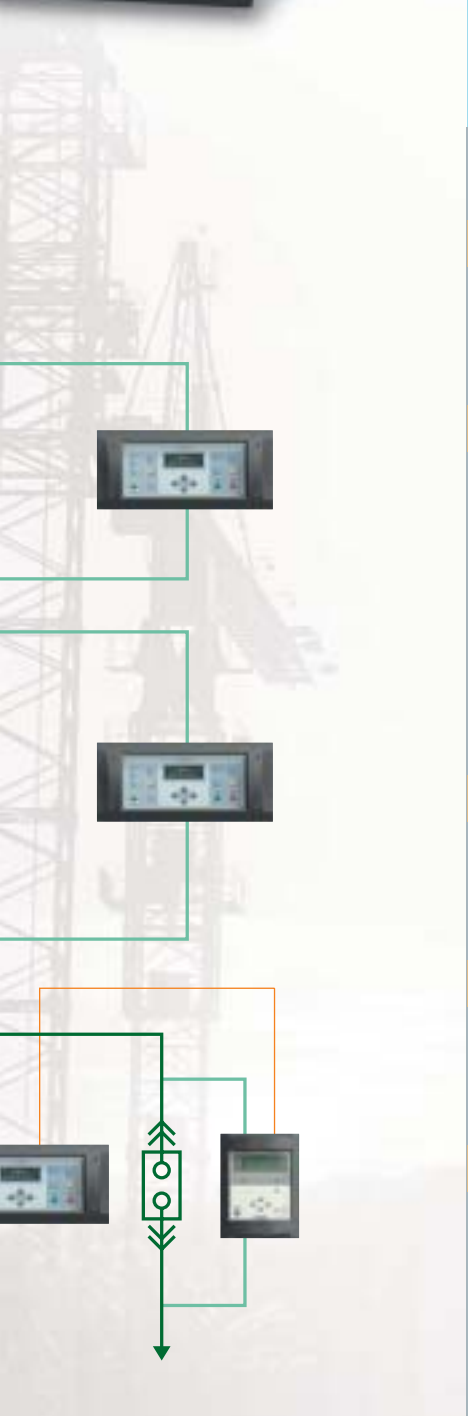






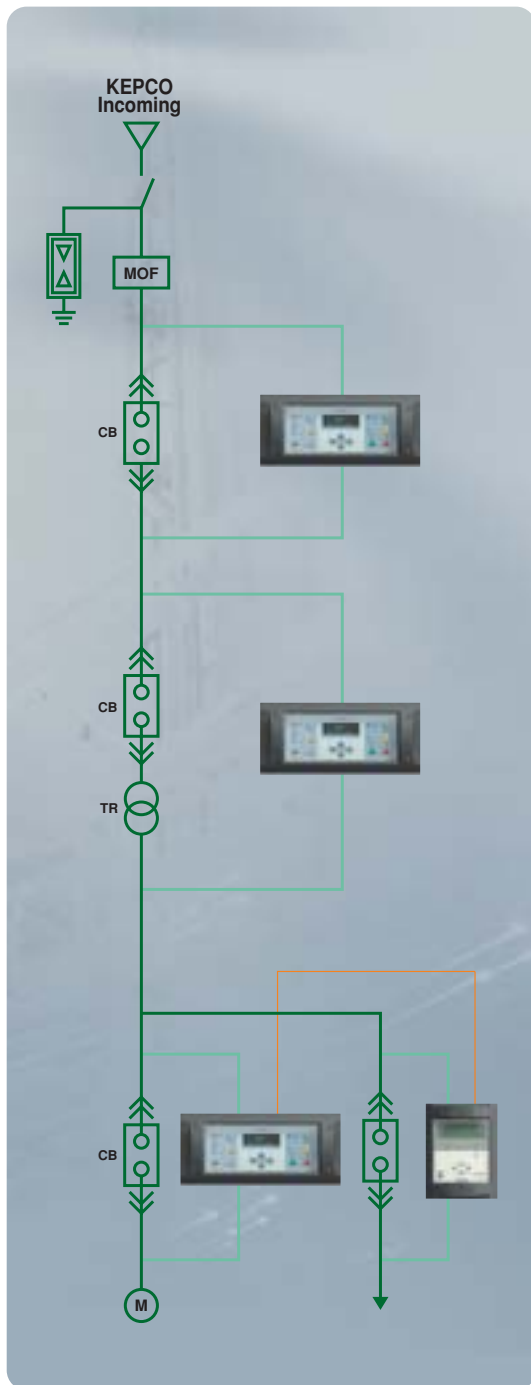
PROMET Series is easy to integrate system, because it offer global standard protocol(such as MODBUS, DNP3.0...) to high end.

The more PROMET-series provides easy communication through terminal port.

Terminal port program(CAMia) is implemented with Window base.



FUNCTION											
		F	T	M	U-I	U-V	U-P	U-VI	U-D	U-M	
POWER-QUALITY	THD	●		●							
	Harmonics(2nd ~11th)	●		●							
DEMAND	DEMAND(15min., 90Days)	●		●							
	PEAK DEMAND (1Peak per month)	●		●							
CONTROL I/O	DI	CB_ON	●	●	●						
		CB_OFF	●	●	●						
		General	9Ch	9Ch	9Ch	2Ch	2Ch	2Ch	2Ch	2Ch	2Ch
	DO	Trip(CB_OFF)	●	●	●	●	●	●	●	●	●
		CB_ON	●	●	●						
		System Fail	●	●	●	●	●	●	●	●	●
Alarm	8Ch	8Ch	8Ch	6Ch	6Ch	6Ch	6Ch	6Ch	6Ch		
Record	Fault Information	1024	1024	1024	128	128	128	128	128	128	
	Fault Wave	4	4	4	2	2	2	2	2	2	
	Operational	1024	1024	1024	128	128	128	128	128	128	
Communi- -cation	MODBUS	●	●	●	●	●	●	●	●	●	
	DNP3.0	option									
	Lonworks	option									
Ratings	Control Power		AC/DC 110 ~ 250[V]								
	Analog	CT	5A								
		ZCT	200/1.5[mA]								
		PT	190/√3 or 110/√3[V]								
		GPT	190 or 110[V]								



Protection

Multiple protection in single unit

- Overcurrent Protection : OCR, OCGR
 - Directional Protection : DOCR, DGR, SGR
 - Voltage Protection : OVR, UVR, OVGR, POR, NSOVR
 - Differential Protection : 87T
 - Motor Protection : THR, UCR, NSOCR, 48ST/51LR
- IEC curves (Inverse, Very Inverse, Extremely Inverse)

Metering

3-Phase Currents, 3-Phase Voltages

Power(W,VAR,VA)

Energy(Import Wh, Varh and Export Wh,Varh)

Frequency and Power Factor

THD and Harmonic Values(2, 3, 4, 5, 6, 7, 8, 9, 11th Harmonics)

Recording

Fault events with time-tag and fault I,V

Oscilloscopic fault waves

Operational events with 1msec resolution

Load Profile

Demand values(V, I, Power, Energy, PF, Hz)

storage (Max 90 days with 15minutes demand)

Max demand values in a month storage (12 data per year)

Control and Monitoring

On, Off control output for circuit-breaker control

Configurable alarm output

Photo-isolated input contacts

Communication

RS-232 on front side

RS-485 on rear side

- MODBUS RTU protocol
- DNP3.0 protocol(Optional)

Convenience

Drawout modules for serviceability

Free voltage power supply(AC/DC 110 ~ 220V)



623, U-Chun Factopia Bldg. 196 Anyang-7 Dong, Manan-Ku, Anyang-City, Kyonggi-Do, 430-017, Korea
 Phone +82-31-467 2700, Fax +82-31-467 2711, Email : neopisweb@neopis.com

