

WTH-SG/BNC

Data & Control
Lightning & Surge Protection
Connection mode: Terminal

Description

WTH-SG series DIN rail surge protective devices are applied to the front side of monitoring video system, CCTV, etc, providing protection against overvoltage arising from lightning strike to the signal line and mis-operation.

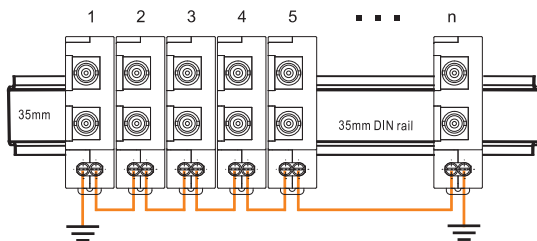
(Standards compliance: IEC61643-21)

Technical data:

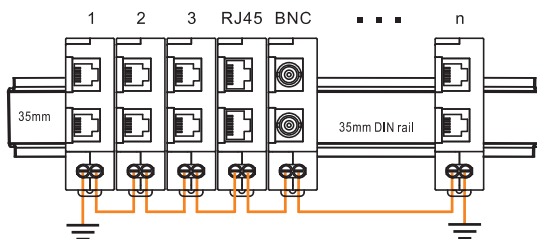
Type	WTH-SG/BNC
Ordering code	121 015
Nominal operating voltage (Un)	24V
Max. continuous operating voltage (UC)	36V
Nominal Discharge Current (In @8/20µs)	3kA (line to line)
Max. Discharge Current (Imax @8/20µs)	20kA (line to earth)
Voltage protection level (Up of line to line)	<80V @ 2kV (10/700)
Voltage protection level (Up of line to earth)	<350V @ 6kV (10/700)
Protective Element	TVS, GDT
Protection Modes	2 stage Hybrid protection
Response Time (tA)	< 1ns
Transmission rate Vs	20M
Attenuation	Better than -0.5db at 20Mhz
Connection mode	BNC
Temperature Range	-40° to 176°F (-40° to 80°C)
Relative Humidity	0% to 95% noncondensing
Maximum Operating Altitude	10,000 feet (3000m)
Cross-sectional area of earth lead	3mm ² multistranded / flexible
Stripping Length Contacts	0.25inches (6-7mm)
Terminal Screw Torque	Max. 0.25Nm
Protection Rating (IP Code)	-
Surge Life at 0.5kA (8/20µs)	>2000 events
Din Rail EN60715	35mm top-hat rail
Housing Material	thermoplastic; extinguishing degree UL 94 V-0
Net Weight Per Unit	0.18Lb (82g)
Package Dimension (W×D×H)	0.9"×2.6"×3.1" (24mm×66.5mm×78mm)

In Accordance with: UL 497, IEC61643-21, CE, RoHS, ISO9001, ISO14001

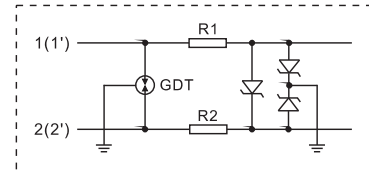
1 Combination of multiple units of the same model



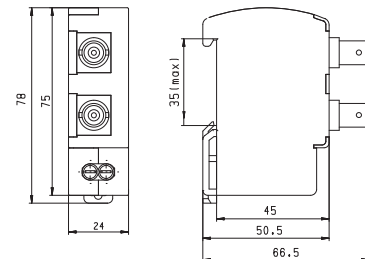
2 Combination of multiple models of WTH-SG series (WTH-SG/RJ45, WTH-SG/TER, WTH-SG/TD, WTH-SG/BNC, WTH-SG/RJ11)



Connection diagram



Dimensions



Installation

